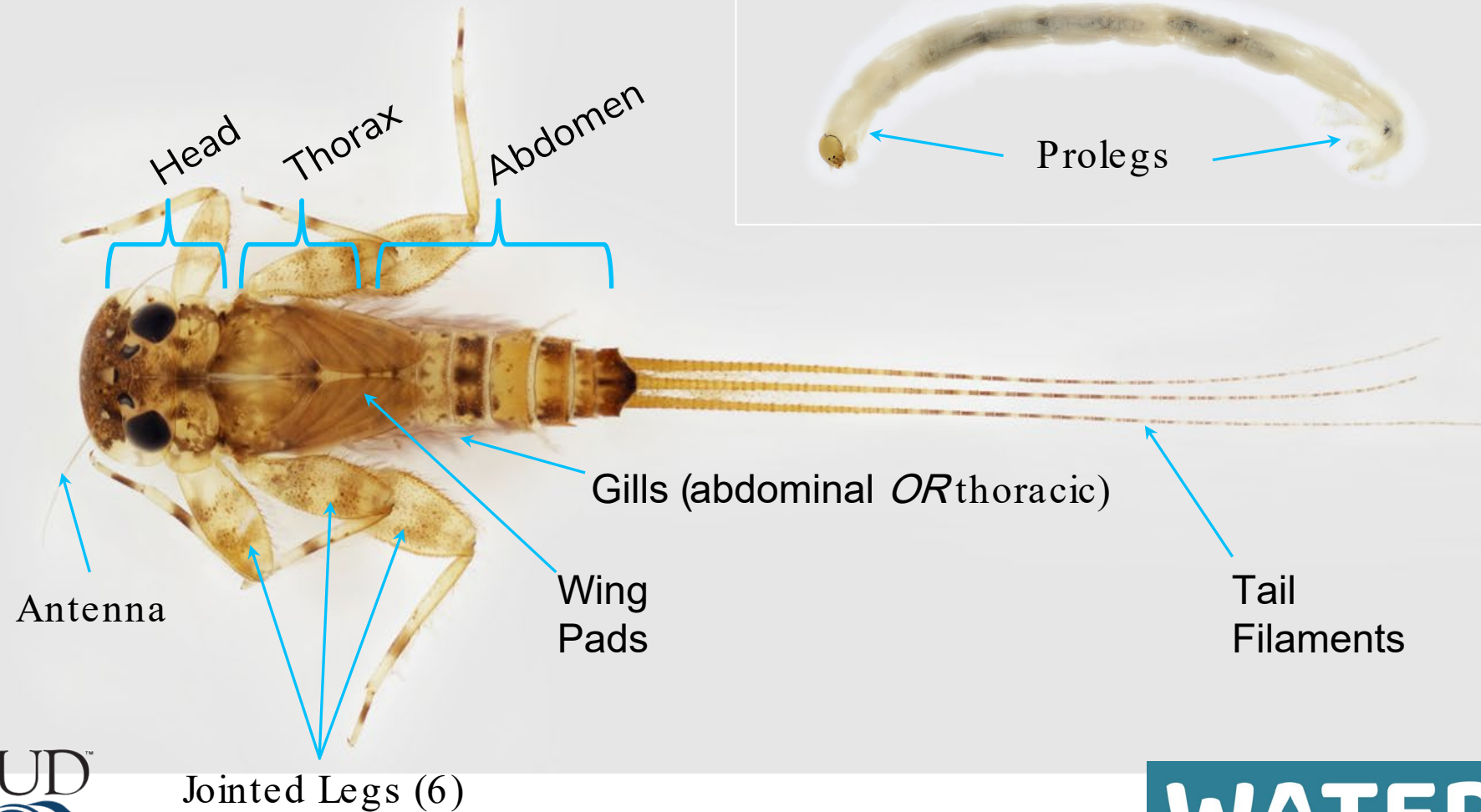
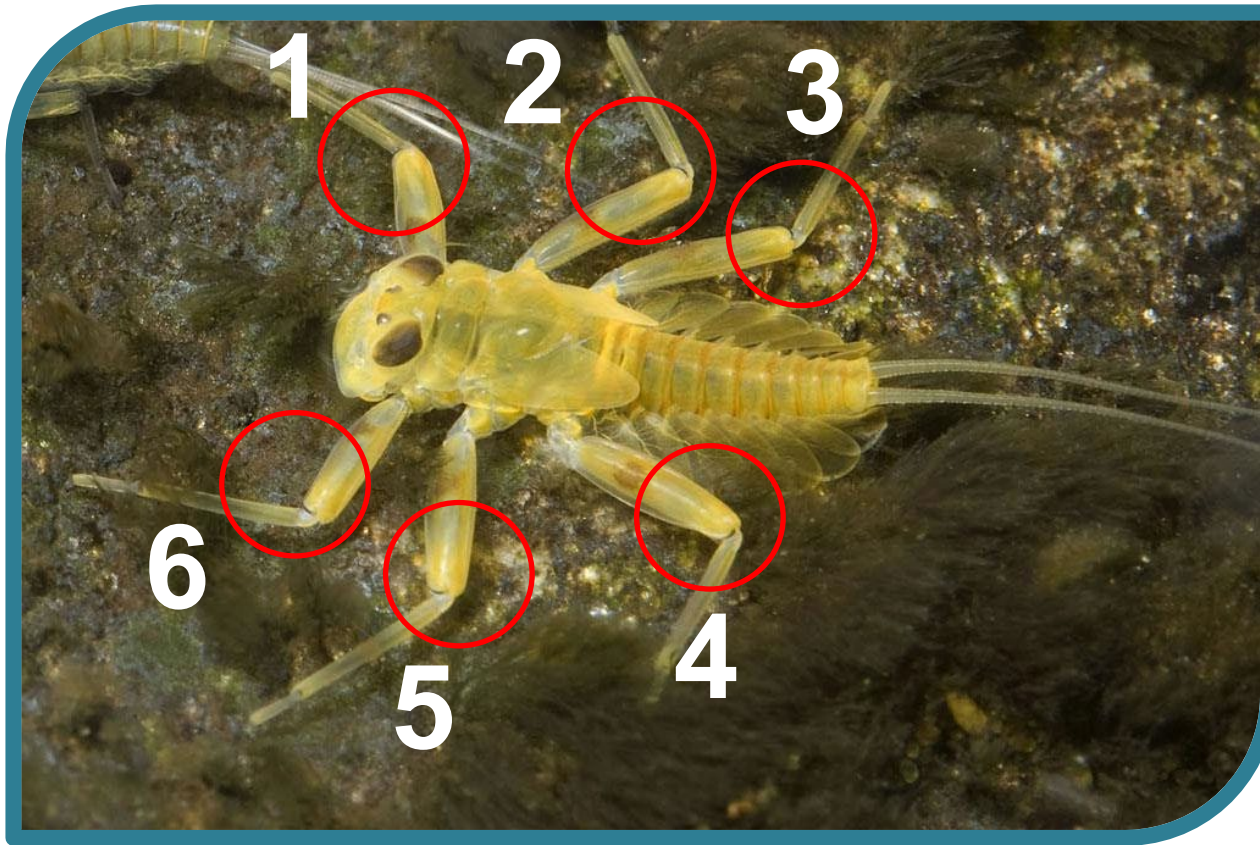


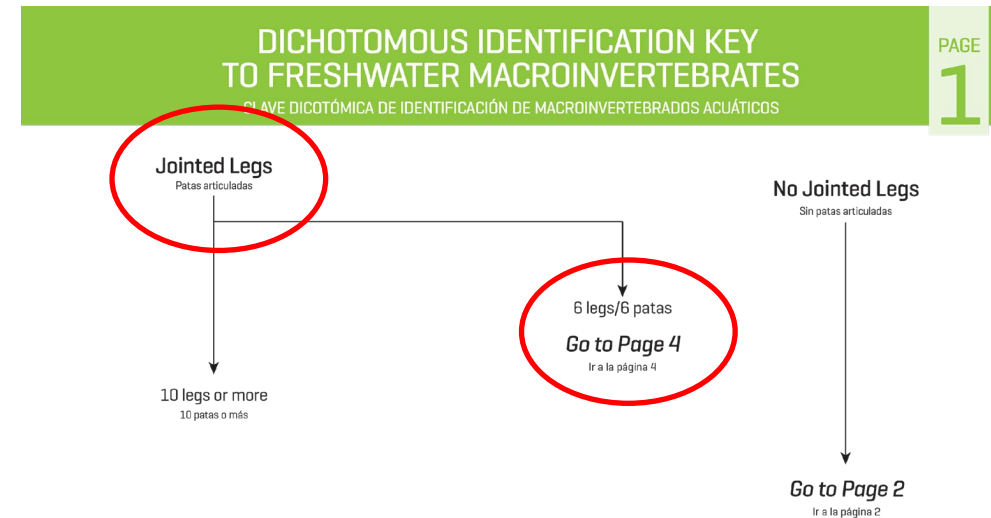
How do we identify an aquatic macroinvertebrate?



How do we identify an aquatic macroinvertebrate?



- Jointed or no jointed legs?
- How many legs?



How do we identify an aquatic macroinvertebrate?

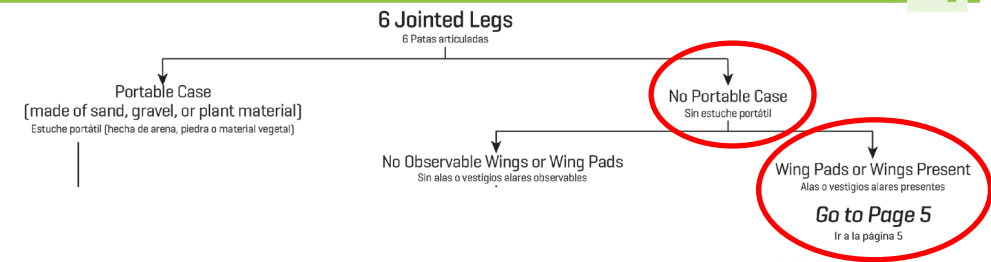
- Portable case?
- Wing pads?



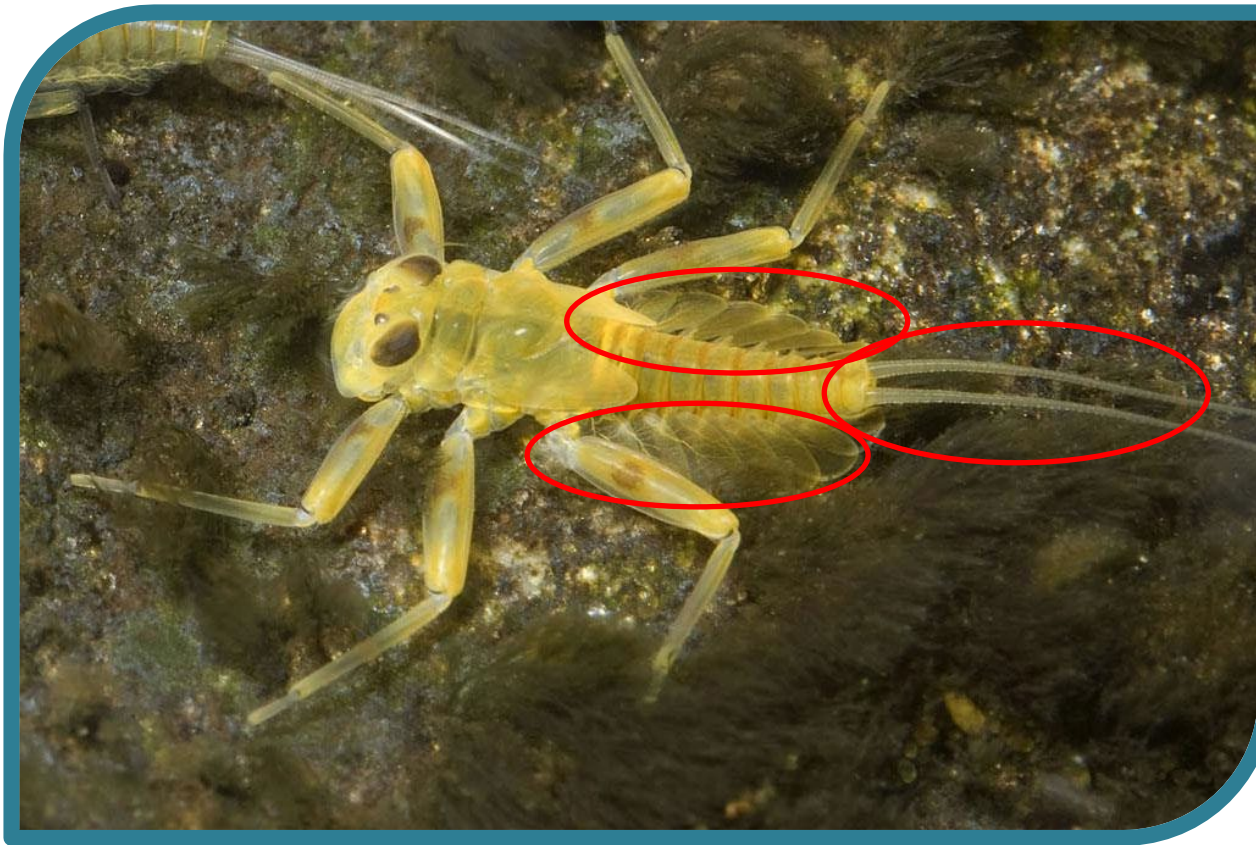
DICHOTOMOUS IDENTIFICATION KEY TO FRESHWATER MACROINVERTEBRATES

CLAVE DICOTÓMICA DE IDENTIFICACIÓN DE MACROINVERTEBRADOS ACUÁTICOS

PAGE
4



How do we identify an aquatic macroinvertebrate?



I am a mayfly nymph!

- ✓ Tail Filaments?
- ✓ Two or three tails?
- ✓ Gills on the abdomen?

DICHOTOMOUS IDENTIFICATION KEY TO FRESHWATER MACROINVERTEBRATES

CLAVE DICOTÓMICA DE IDENTIFICACIÓN DE MACROINVERTEBRADOS ACUÁTICOS

PAGE
5

